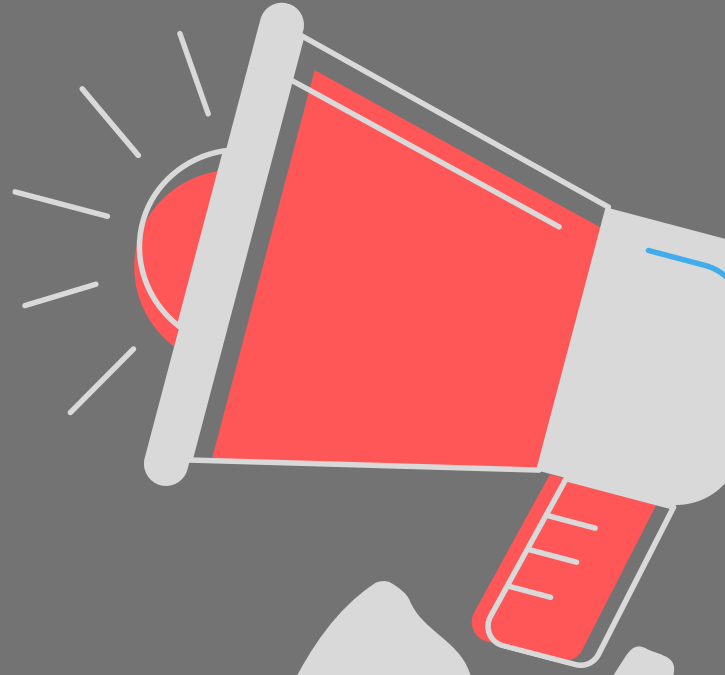


SHOTOVER LODGE

COVID-19 Update

as of April 27th 2020



ALERT LEVEL 3

WHAT IT MEANS

- 1: We are still instructed to stay home & in our bubble unless we are required to leave for work, need to access essential services or undertake low risk exercise.
- 2: The existing Shotover Lodge bubble will not be expanded until level 2. External guests are not permitted at level 3.
- 3: For residents leaving the bubble to resume work at level 3:
 - Your employer should be facilitating work conditions in which you can maintain 1m social distancing from others
 - You must practice social distancing when returning to Shotover lodge
 - You must follow strict hygiene protocol both in the workplace and when returning to home to the lodge - handwashing and cleaning of communal areas used.
- 4: **IF ANY RESIDENT FEELS UNWELL YOU MUST SELF-ISOLATE IMMEDIATELY, REMOVE YOURSELF FROM OTHER RESIDENTS & INFORM LODGE MANAGEMENT VIA PHONE**



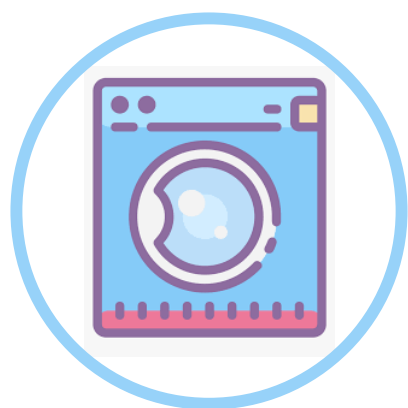
NO TOUCHING:

When you return home, try not to touch anything until you have cleaned your hands properly.



LEAVE SHOES AT THE DOOR:

Remove your shoes, do not walk through the lodge with them on. Ideally leave them outside



WASH YOUR WORK CLOTHES:

Immediately change out of work clothes / uniform and wash in a hot washing machine cycle. If possible leave uniform at work.



PERSONAL ITEMS:

Leave non-essential items at work and disinfect items you have used at work that you have to keep with you, e.g. mobile phones.



SHOWER:

Have a shower and make sure to clean your hands, wrists, arms, neck, nails and areas that might have been exposed.